

FR-240

MANAGEMENT SOFTWARE: PC_to_FR240

The “**PC_to_FR240**” programme allows to insert manually the names and the countries of fencers on large **FR-240** scoreboards (Art.960). This programme is not necessary if the software that manage the fencing competition uses the CYRANO protocol.

INDICE

| | |
|--|--|
| 1. GENERAL INFORMATION.....1 | 2.1 Activating the programme.....1 |
| 1.1 Installing the programme.....1 | 2.2 Inserting and modifying data.....2 |
| 2. OPERATING INSTRUCTIONS.....1 | 2.3 Saving and retrieving data.....2 |
| | 2.4 Sending data.....2 |
| | 2.5 Closing the programme.....2 |

1. GENERAL INFORMATION

This document describes the installation and use of the “**PC_to_FR240**” programme on Personal Computers for the insertion of fencers’ names and countries in the **FA-07** piste apparatus. The **FA-07** controls the display of such information on the large **FR-240** scoreboard (Ar.960).

The programme works on PCs equipped with either Microsoft ® (Windows XP, Vista, Windows 7) or Linux operating systems, provided that there is a 6.0 version of Java software, with upgrade 15 or newer, installed.

1.1 Installing the programme

The programme can be downloaded free of charge from the Favero Electronic Design web site (www.favero.com), on the product page for Fencing **FR240** (Art.960). Save the file “**PC_to_FR240**” in a folder on the PC and unpack it; it contains the file “**PC_to_FR240.jar**” and the sub-folder “**lib**”.

2. OPERATING INSTRUCTIONS

2.1 Activating the programme

Activate the programme by double clicking on the file “**PC_to_FR240.jar**”: the **Pc to Fr-240** window will appear as in Fig. 1.

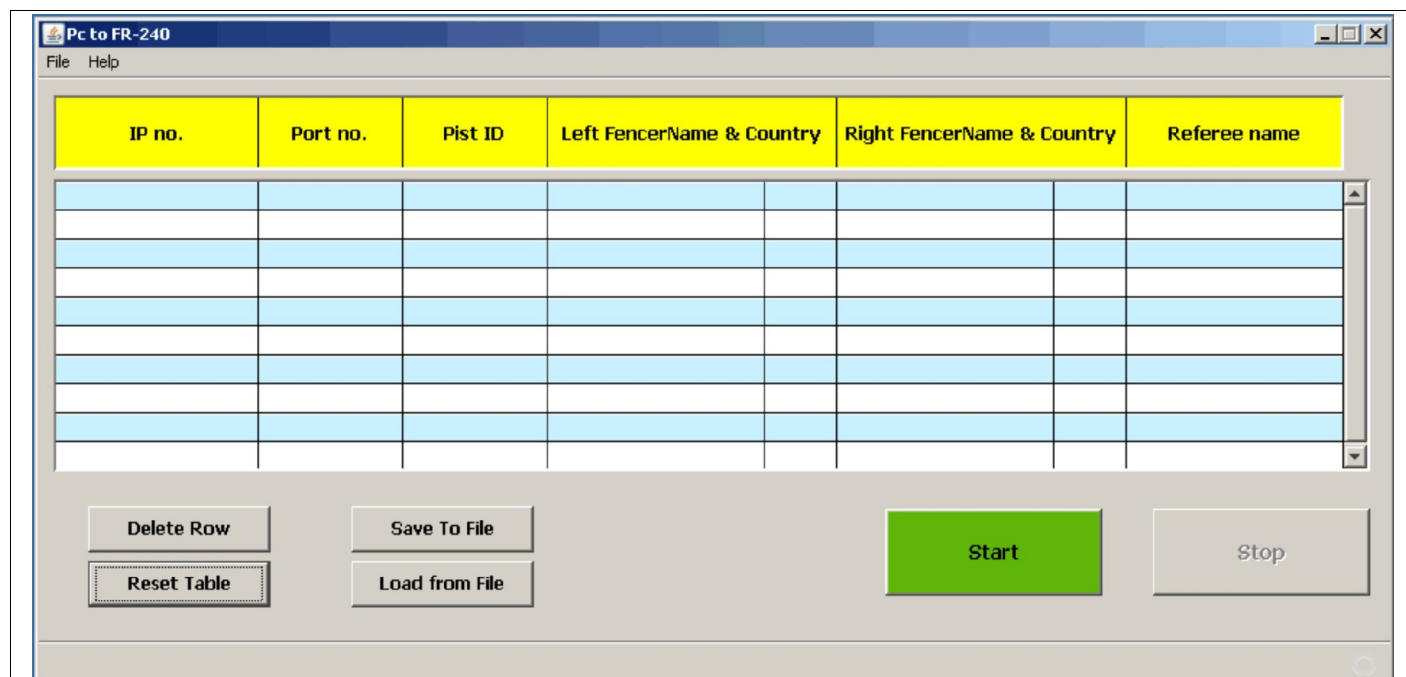


Fig. 1: PC_to_FR240 programme user interface

2.2 Inserting and modifying data

Each line of the table (Fig. 1) refers to a **FA-07** (Art.940) piste apparatus, connected to the computer via an Ethernet port and identified by an IP address (**IP no.**) and port number (**Port no.**); to this **FA-07** apparatus, the **FR240** is connected for displaying match information (scores, hit lights, penalty cards, priority, name and country of fencers).

For each line on the table, insert the IP address (e.g., 192.168.001.231) and the port number of the relative **FA-07** apparatus and then the information that you want displayed.

To make the connection between the PC and the **FA-07** is necessary to set the PC's IP address as static, and belonging to the same subnet of the **FA-07**. For example, if the IP of the **FA-07** is 192.168.001.xxx, set the IP address of the PC to 192.168.001.yyy, where xxx and yyy have to be different.

By clicking on the button **"Delete Row"** you can eliminate all the data inserted in one line, while the **"Reset Table"** button allows you to reset the entire table.

To modify a single element of data:

1. Click on the desired cell;
2. Use the keyboard keys **"Canc"** and **"Backspace"** to cancel data;
3. Insert the new data and confirm by clicking **"Start"**.

2.3 Saving and retrieving data

With each modification, the inserted data is saved to the file **"AutoSave.txt"**, located in the folder containing the programme. The data is automatically reloaded each time the programme is restarted.

Inserted data can also be saved to another file of any given name:

1. Click on the button **"Save to File"**;
2. From the window that appears, choose the folder to which you want to save the file;
3. Insert the name of the file;
4. Confirm by clicking on the button **"Save"**.

To retrieve the data:

1. Click on the button **"Load from File"**;
2. From the window that appears, choose the folder from which you want to retrieve the file;
3. Select the file you previously saved;
4. Confirm by clicking on the button **"Open"**.

2.4 Sending data

Click on the button **"Start"** and then click **"Yes"** (Fig. 2) to start sending the inserted data to the relative FA-07 apparatuses. Since transmission is repeated every 5 seconds, each modification is displayed by the **FA-07** and **FR-240** within that time.

You can continue to insert, eliminate, and modify data in the table during the transmission of data.

To interrupt communication, click on the button **"Stop"** and then confirm by clicking **"Yes"** (Fig. 3).

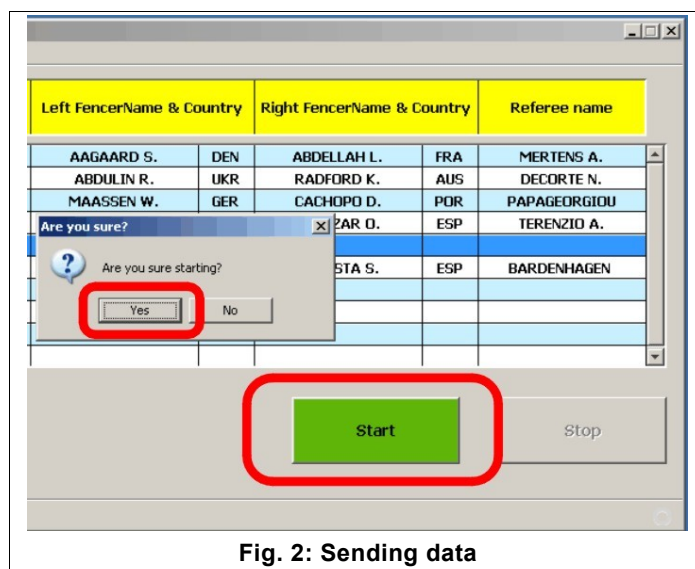


Fig. 2: Sending data

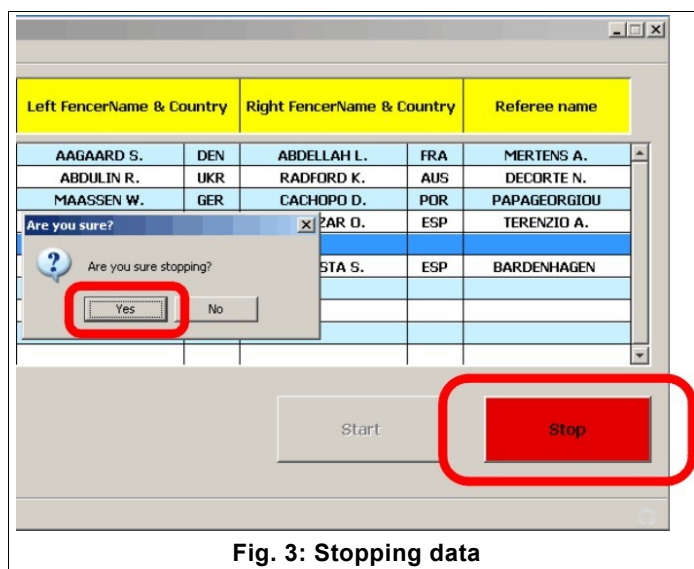


Fig. 3: Stopping data

2.5 Closing the programme

Click on the **"X"** button in the upper right-hand corner of the window.